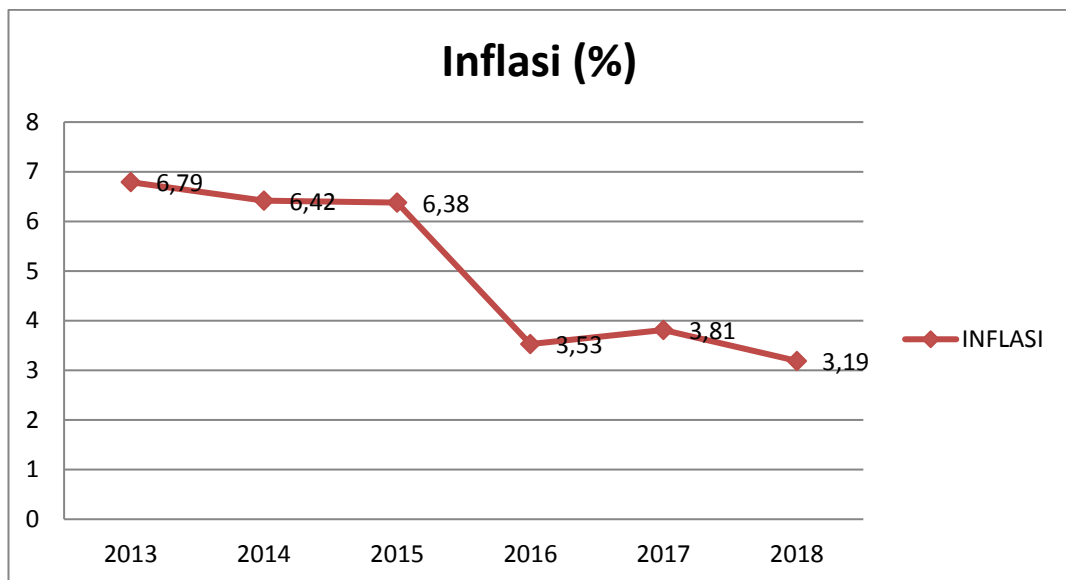


Lampiran 1

Pergerakan Inflasi (%) Periode 2013-2018

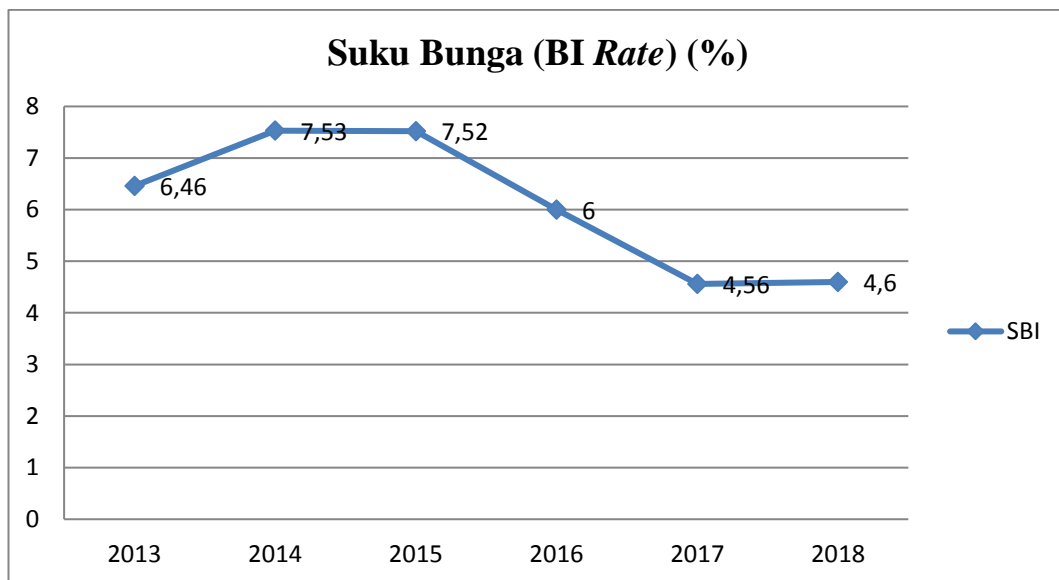
BULAN	Tahun					
	2013	2014	2015	2016	2017	2018
Januari	4.57	8.22	6.96	4.14	3.49	3.25
Februari	5.31	7.75	6.29	4.42	3.83	3.18
Maret	5.90	7.32	6.38	4.45	3.61	3.40
April	5.57	7.25	6.79	3.60	4.17	3.41
Mei	5.47	7.32	7.15	3.33	4.33	3.23
Juni	5.90	6.70	7.26	3.45	4.37	3.12
Juli	8.61	4.53	7.26	3.21	3.88	3.18
Agustus	8.79	3.99	7.18	2.79	3.82	3.20
September	8.40	4.53	6.83	3.07	3.72	2.88
Oktober	8.32	4.83	6.25	3.31	3.58	3.16
November	8.37	6.23	4.89	3.58	3.30	3.23
Desember	8.38	8.36	3.35	3.02	3.61	3.13
Min	4.57	3.99	3.35	2.79	3.30	2.88
Max	8.79	8.36	7.26	4.45	4.37	3.41
Rata-rata	6.79	6.42	6.38	3.53	3.81	3.19



Lampiran 2

Pergerakan Suku Bunga (BI Rate) (%) Periode 2013-2018

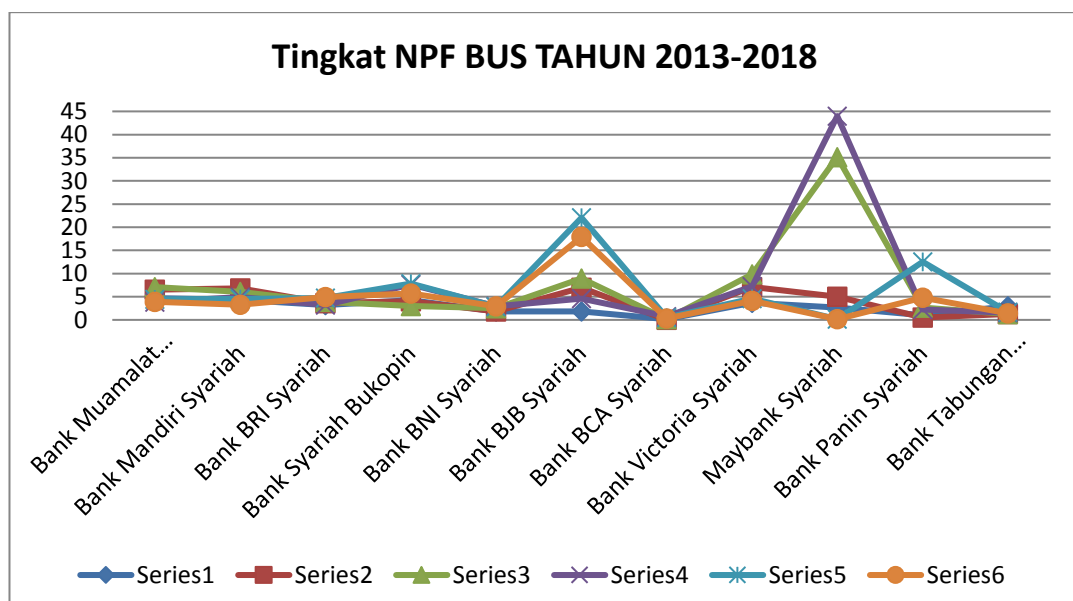
Tahun						
BULAN	2013	2014	2015	2016	2017	2018
Januari	5.75	7.50	7.75	7.25	4.75	4.25
Februari	5.75	7.50	7.50	7.00	4.75	4.25
Maret	5.75	7.50	7.50	6.75	4.75	4.25
April	5.75	7.50	7.50	6.75	4.75	4.25
Mei	5.75	7.50	7.50	6.75	4.75	4.75
Juni	6.00	7.50	7.50	6.50	4.75	5.25
Juli	6.50	7.50	7.50	6.50	4.75	5.25
Agustus	6.75	7.50	7.50	5.25	4.50	5.50
September	7.25	7.50	7.50	5.00	4.25	5.75
Oktober	7.25	7.50	7.50	4.75	4.25	5.75
November	7.50	7.63	7.50	4.75	4.25	6.00
Desember	7.50	7.75	7.50	4.75	4.25	6.00
Min	5.75	7.50	7.50	4.75	4.25	4.25
Max	7.50	7.75	7.75	7.52	4.75	6.00
Rata-rata	6.46	7.53	7.52	6	4.56	4.6



Lampiran 3

Pergerakan NPF Bank Umum Syariah (%) Periode 2013-2018

Bank Umum Syariah	Tahun					
	2013	2014	2015	2016	2017	2018
Bank Muamalat Indonesia	4.69	6.55	7.11	3.83	4.43	3.87
Bank Mandiri Syariah	4.31	6.83	6.06	4.92	4.53	3.28
Bank BRI Syariah	3.20	3.65	3.89	3.19	4.72	4.97
Bank Syariah Bukopin	4.27	4.07	2.99	7.63	7.85	5.71
Bank BNI Syariah	1.86	1.86	2.53	2.94	2.89	2.93
Bank BJB Syariah	1.86	6.91	8.93	4.58	22.04	17.91
Bank BCA Syariah	0.15	0.03	0.15	0.75	0.52	0.32
Bank Victoria Syariah	3.71	7.11	9.81	7.21	4.59	4.11
Maybank Syariah	2.69	5.04	35.15	43.99	0.15	0.15
Bank Panin Syariah	1.02	0.53	2.63	2.26	12.52	4.81
Bank Tabungan Pensiunan Nasional	2.94	1.29	1.25	1.53	1.67	1.39



Lampiran 4

Hasil Uji Normalitas

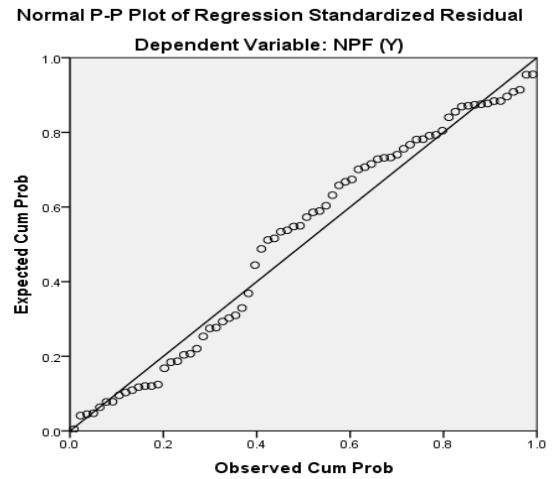
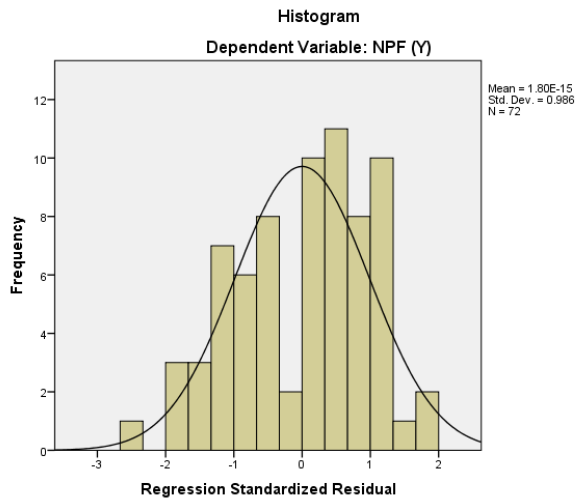
One-Sample Kolmogorov-Smirnov Test

		Unstandardized Residual
N		72
Normal Parameters ^{a,b}	Mean	.0000000
	Std. Deviation	.63412700
Most Extreme Differences	Absolute	.095
	Positive	.074
	Negative	-.095
Test Statistic		.095
Asymp. Sig. (2-tailed)		.174 ^c

a. Test distribution is Normal.

b. Calculated from data.

c. Lilliefors Significance Correction.

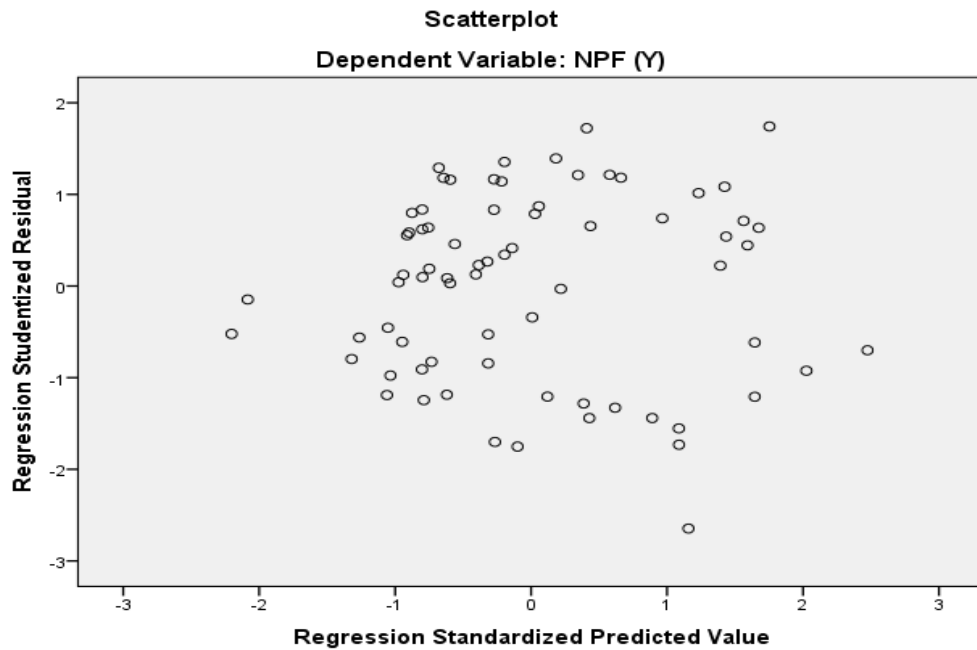


Lampiran 5

Hasil Uji Multikolinieritas

Model		Collinearity Statistics	
		Tolerance	VIF
1	(Constant)		
	Inflasi (X1)	.515	1.943
	Suku Bunga (X2)	.515	1.943

Hasil Uji Heteroskedastisitas



Hasil Uji Autokorelasi

Model Summary^b

Model	R	R Square	Adjusted R Square	Std. Error of the Estimate	Durbin-Watson
1	.374 ^a	.140	.115	.64325	.355

a. Predictors: (Constant), Suku Bunga (X2), Inflasi (X1)

b. Dependent Variable: NPF (Y)

Lampiran 6

Hasil Uji Autokorelasi

Model Summary^b

Model	R	R Square	Adjusted R Square	Std. Error of the Estimate	Durbin-Watson
1	.374 ^a	.140	.115	.64325	.355

a. Predictors: (Constant), Suku Bunga (X2), Inflasi (X1)

b. Dependent Variable: NPF (Y)

Hasil Uji Analisis Korelasi

Model Summary^b

Model	R	R Square	Adjusted R Square	Std. Error of the Estimate	Durbin-Watson
1	.374 ^a	.140	.115	.64325	.355

a. Predictors: (Constant), Suku Bunga (X2), Inflasi (X1)

b. Dependent Variable: NPF (Y)

Hasil Uji Analisis Regresi Linier Berganda

Model		Unstandardized Coefficients		Standardized Coefficients	t	Sig.
		B	Std. Error	Beta		
1	(Constant)	3.986	.389		10.248	.000
	Inflasi (X1)	-.180	.057	-.494	-3.176	.002
	Suku Bunga (X2)	.251	.084	.465	2.989	.004

Hasil Analisis Koefisien Determinasi

Model Summary^b

Model	R	R Square	Adjusted R Square	Std. Error of the Estimate
1	.374 ^a	.140	.115	.64325

a. Predictors: (Constant), Suku Bunga (X2), Inflasi (X1)

b. Dependent Variable: NPF (Y)

Hasil Uji t

Coefficients^a

Model	Unstandardized Coefficients		Standardized Coefficients	t	Sig.
	B	Std. Error	Beta		
(Constant)	3.986	.389		10.248	.000
Inflasi (X1)	-.180	.057	-.494	-3.176	.002
Suku Bunga (X2)	.251	.084	.465	2.989	.004

a. Dependent Variable: NPF (Y)

Hasil Uji F

ANOVA^a

Model		Sum of Squares	df	Mean Square	F	Sig.
1	Regression	4.657	2	2.328	5.627	.005 ^b
	Residual	28.550	69	.414		
	Total	33.207	71			

a. Dependent Variable: NPF (Y)

b. Predictors: (Constant), Suku Bunga (X2), Inflasi (X1)